



# MONTHLY MEMBERSHIP PROGRESS REPORT

District 315A2

Results as of: 11/30/2017

GMT: SWADESH RANJAN SAHA

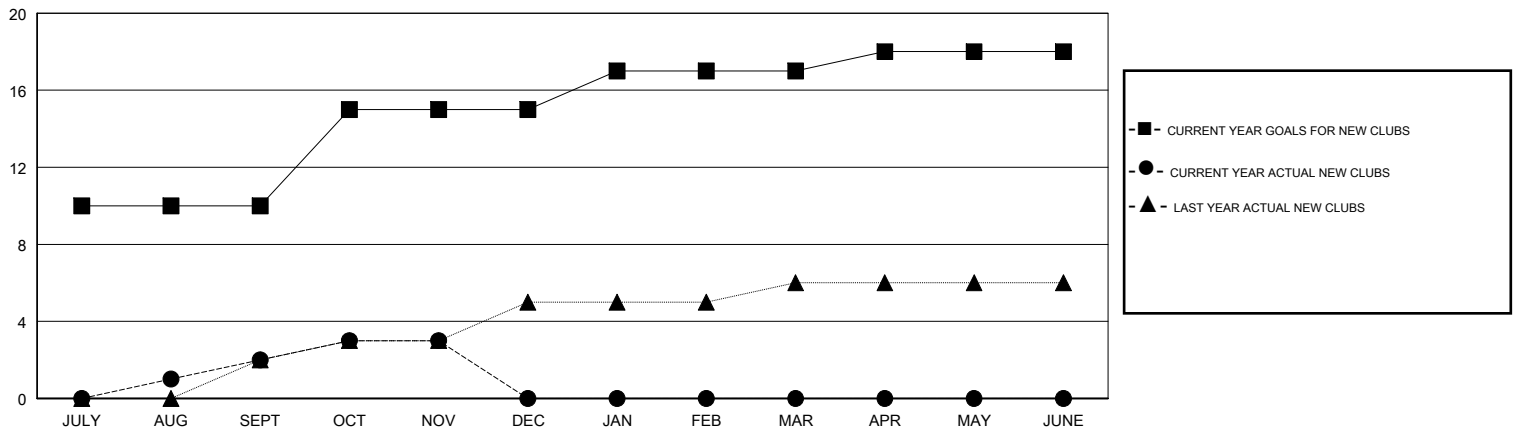
LOCATION REP OF BANGLADESH

GMT CA

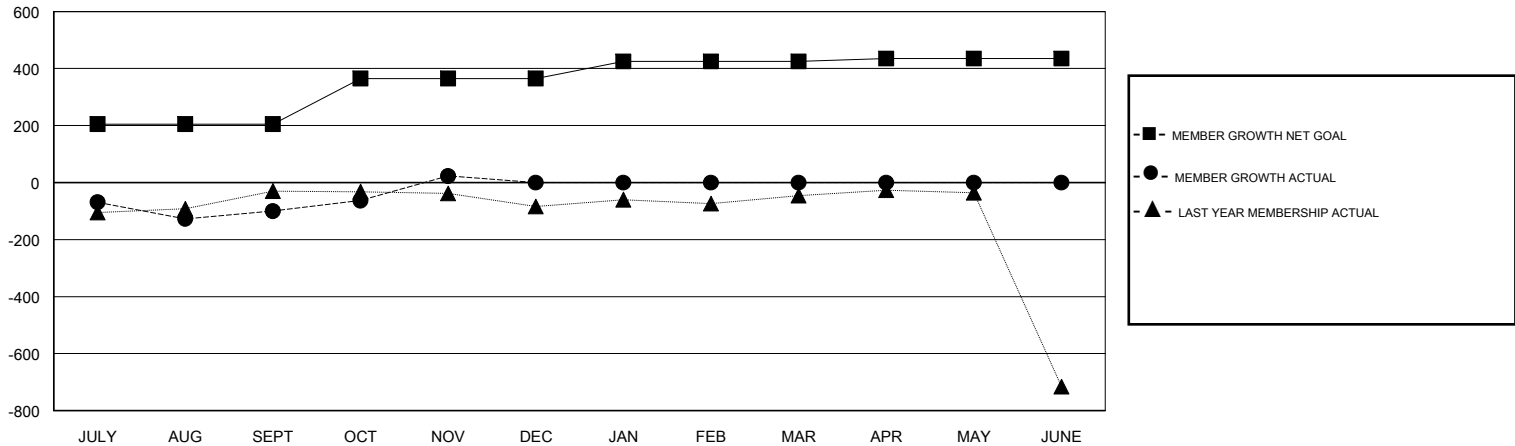
Clubs			
RESULTS FOR 2017-2018			
QUARTER	NEW CLUB GOAL	NEW CLUBS	DROPPED CLUBS
JULY/AUG/SEPT	10	2	2
OCT/NOV/DEC	5	1	0
JAN/FEB/MAR	2	0	0
APR/MAY/JUNE	1	0	0

Members			
RESULTS FOR 2017-2018			
QUARTER	MEMBER GROWTH NET GOAL	MEMBER GROWTH ACTUAL	DROPPED MEMBERS ACTUAL (including transfers)
JULY/AUG/SEPT	205	147	239
OCT/NOV/DEC	160	152	21
JAN/FEB/MAR	60	0	0
APR/MAY/JUNE	10	0	0

GOALS AND ACTUAL NEW CLUBS CUMULATIVE



GOALS AND ACTUAL MEMBERS CUMULATIVE



DROPPED CLUBS: 2	37 CLUBS OF 111 ADDED 1 OR MORE NEW MEMBERS	<u>GENDER DISTRIBUTION</u>	
DROPPED MEMBERS		MALE	2,577 (79.10%)
DECEASED	2	FEMALE	681 (20.90%)
CLUB CANCELLED	12	Women Percentage Fiscal Year Goal: 25%	
OTHER	246	TOTAL FAMILY UNIT MEMBERS	1,720
TOTAL	260	FAMILY MEMBERS PAYING HALF DUES	1,267

[CLICK HERE FOR CUMULATIVE MEMBERSHIP DATA](#)